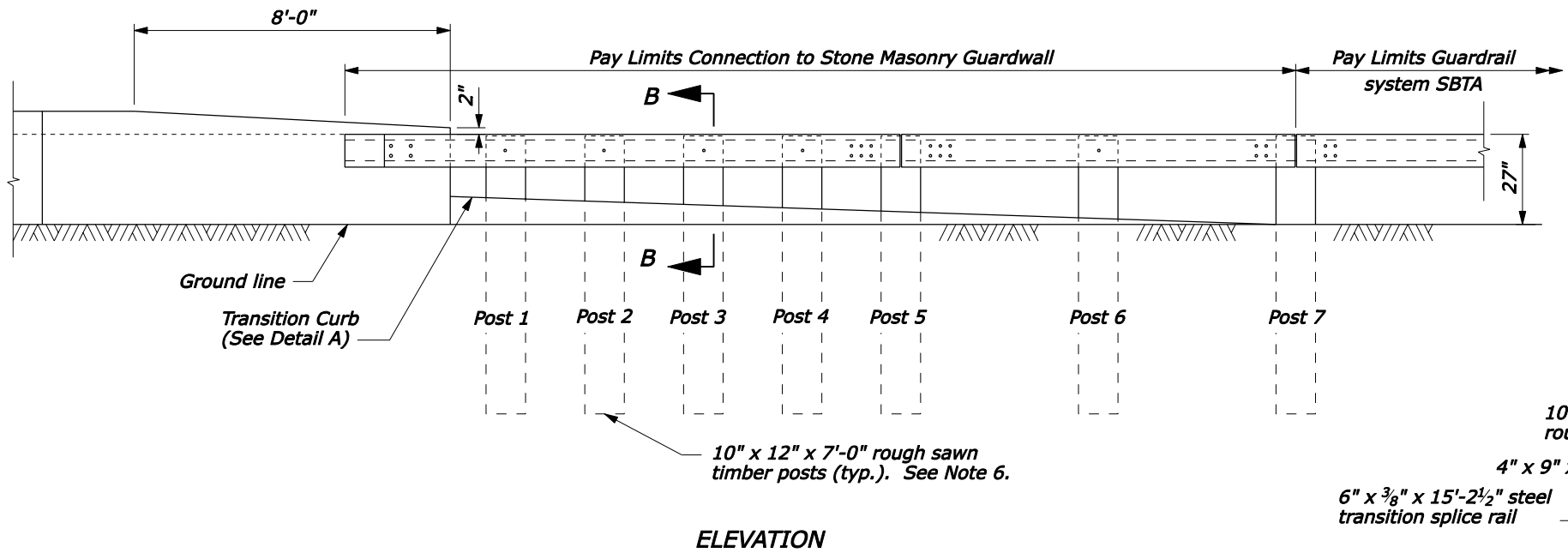
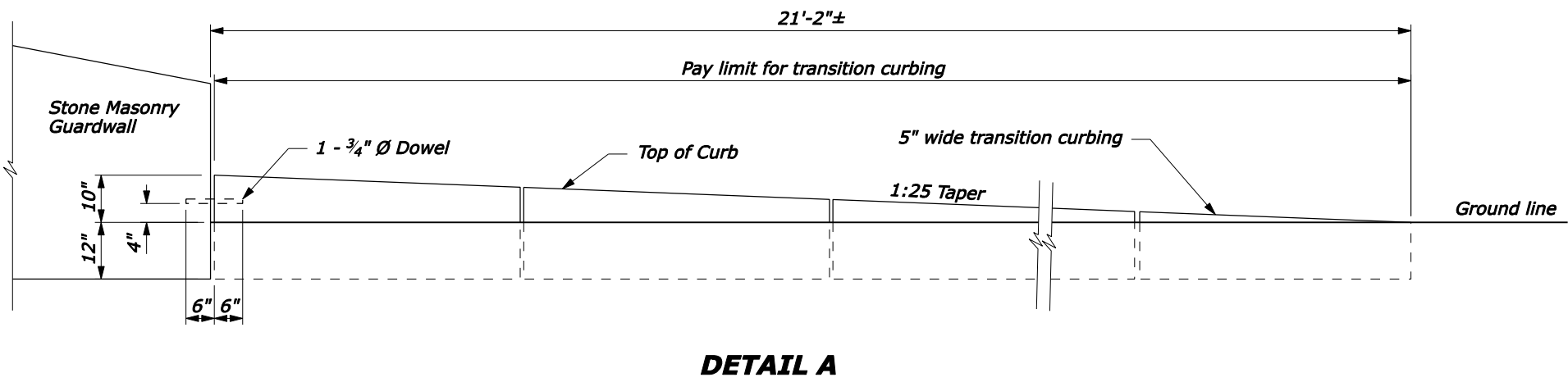
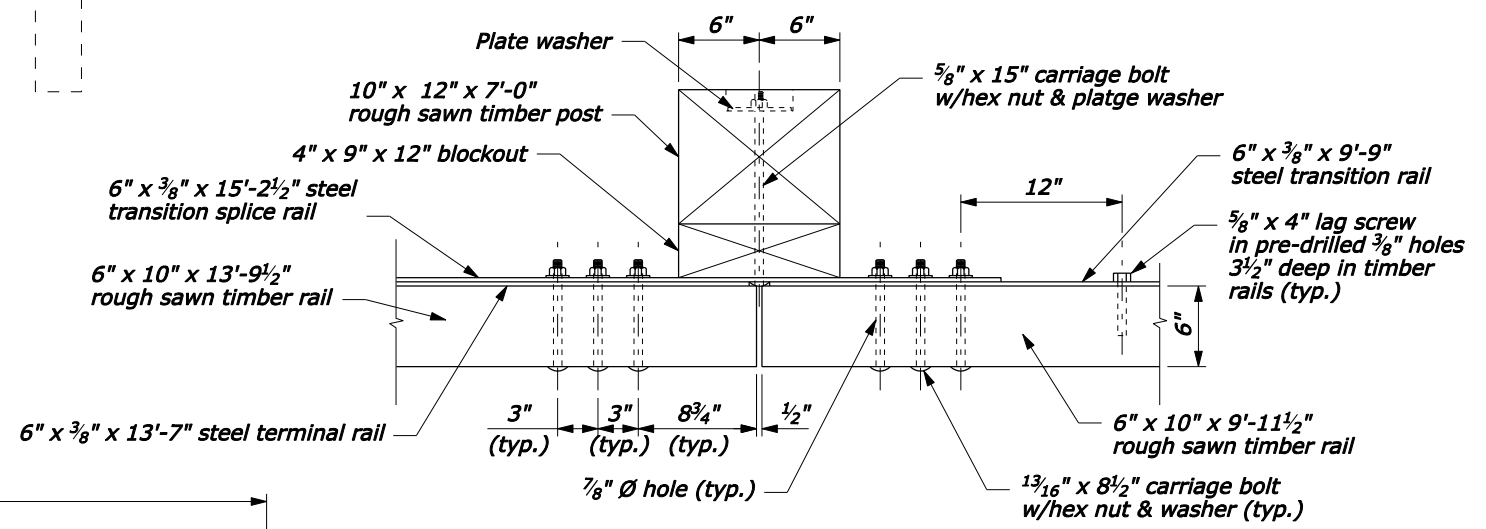


NOTE:

1. See Sheet 2 of 2 for Sections A-A through C-C, steel rail layouts, and other details.
2. Use weathering steel for all structural steel and fastener hardware.
3. Transition curbing (including dowel) will be paid for at the contract unit price for transition curbing.
4. Install transition curbing of material type specified in plans.
5. Curb may be continuous or slabs at least 4'-11" in length. Install faces of slabs evenly and with maximum 1/8" separation.
6. If contract requires steel post, substitute wood post with 6" x 9" x 6'-6" long steel post.



FOR COMMENT



DETAIL B

NO SCALE

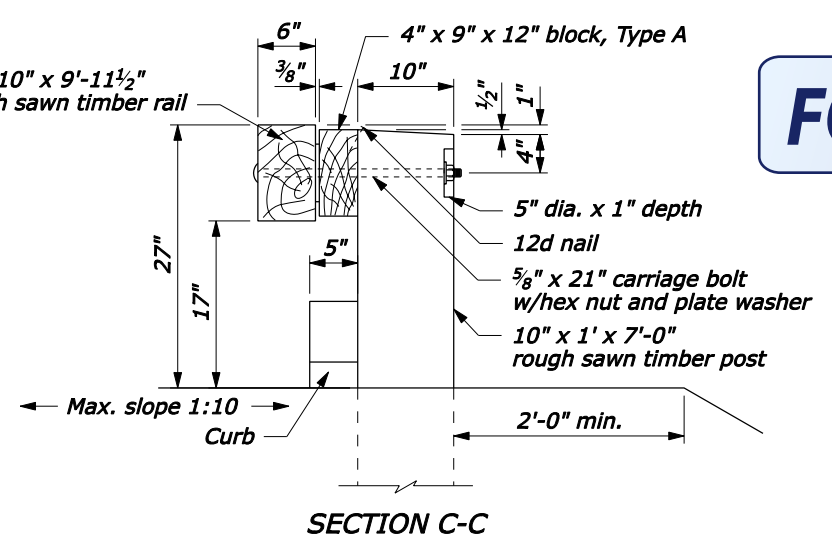
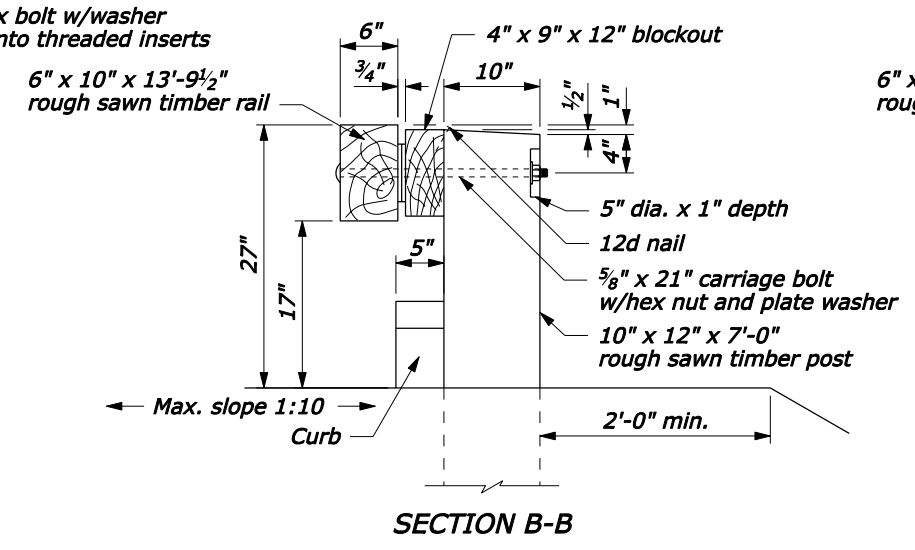
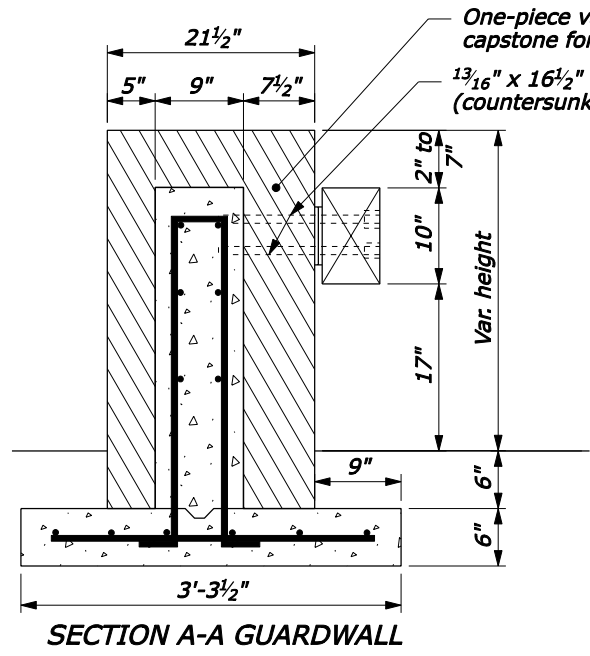
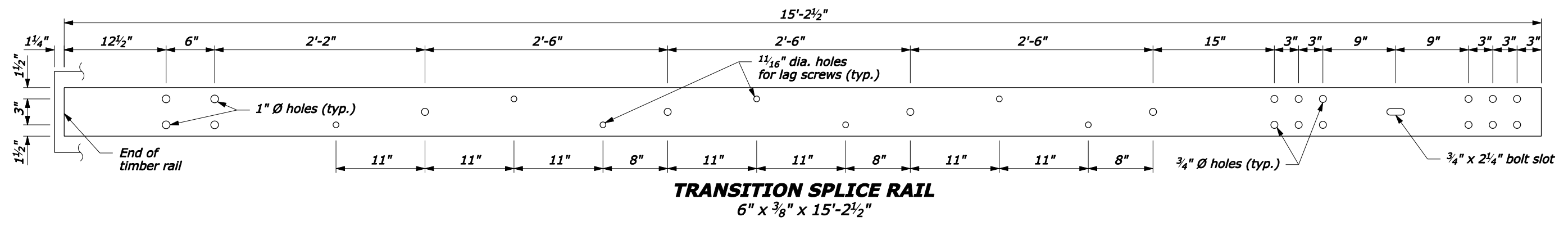
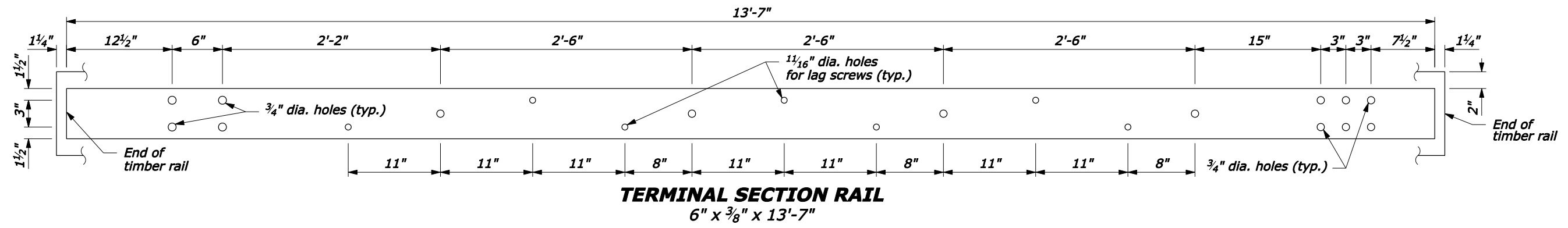
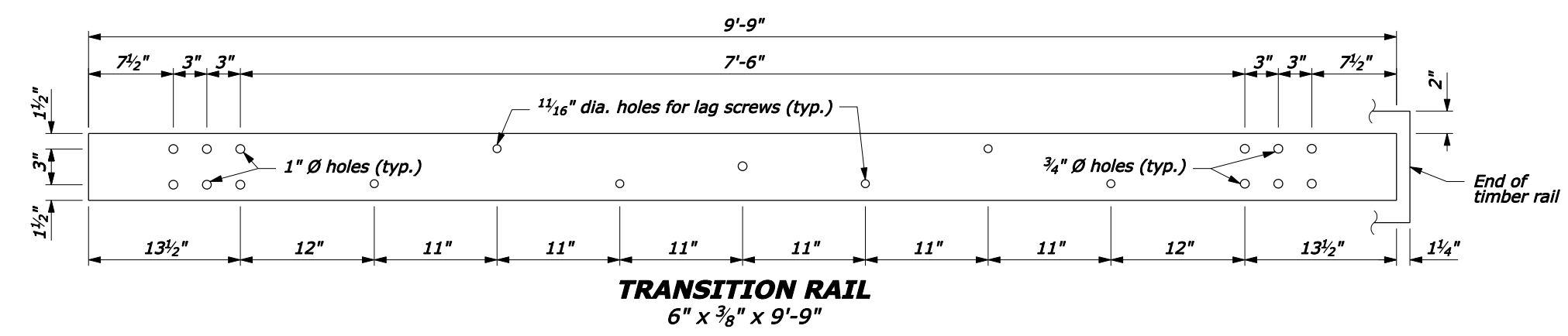
U.S. DEPARTMENT OF TRANSPORTATION
 FEDERAL HIGHWAY ADMINISTRATION
 FEDERAL LANDS HIGHWAY

U.S. CUSTOMARY STANDARD
**STEEL-BACKED TIMBER GUARDRAIL
 TL-3 CONNECTION TO
 STONE MASONRY GUARDRAIL**
 Sheet 1 of 2

STANDARD APPROVED FOR USE --/----	STANDARD
REVISED: DRAFT: 1/2005	617-65

F:\StdDraw\Draw\18\std61765.dgn [US Customary] 19-Jan-2005 10:27 AM

NOTE:
1. Pre-drill $\frac{11}{16}$ " holes in blocks outs and posts.



FOR COMMENT

U.S. DEPARTMENT OF TRANSPORTATION
FEDERAL HIGHWAY ADMINISTRATION
FEDERAL LANDS HIGHWAY

**U.S. CUSTOMARY STANDARD
STEEL-BACKED TIMBER GUARDRAIL
TL-3 CONNECTION TO
STONE MASONRY GUARDRAIL**
Sheet 2 of 2

STANDARD APPROVED FOR USE --/----

REVISED: DRAFT: 1/2005

STANDARD
617-65

NO SCALE

F:\StanDraw\Draw\1765.dgn [US Customary] 19-Jan-2005 10:28 AM